



Center of Excellence

MECHANICAL ENGINEERING:

Triodyne Inc. (Est. 1989)

Officers
Ralph L. Barnett
Dolores Gidin

Mechanical Engineering

Ralph L. Barnett
Michael A. Dilich
Christopher W. Ferrone
John M. Goubetbecker
Audra E. Gray
Crispin Hales, Ph.D.
Dror Kopernik
Woodrow Nelson
Peter J. Poczynok
George J. Trzeciak, Ph.D.
Matthew J. Ulmerstine
James R. Wingfield, Ph.D.

Library Services

Marna S. Sanders
Donna Klick
John Kristall
Florence Lasky

Information Products

Expert Transcript Center (ETC)
Marna S. Sanders

Graphic Communications

Robert Koutny
Charles D'Ecclifis

Training and Editorial Services

Paula L. Barnett

Vehicle Laboratory

Charles Sinkovits

Model Laboratory

2721 Alison Lane
Wilmette, IL 60091-2101
Bill Brown

Business Systems

Chris Ann Strunk
Rita Curtis
Sandy Moretti
Sandra Prieto

Facilities Management

Peter W. Warner

CONSTRUCTION:

Triodyne-Wangler Construction Company Inc. (Est. 1993)

666 Dundee Road, Suite 103
Northbrook, IL 60062-2702
(847) 677-4730
FAX: (847) 647-2047



Triodyne Inc.

Consulting Engineers & Scientists - Safety Philosophy & Technology
666 Dundee Road, Suite 103, Northbrook, IL 60062-2702
(847) 677-4730 FAX: (847) 647-2047
e-mail: infoserv@triodyne.com
www.triodyne.com

MODEL LABORATORY



Figure 1 - It's just a plane room. The central Joiner is a stationary power tool. There are two Portable Power Planers in the lower right corner.

The Triodyne Model Laboratory is a combination woodshop, tool museum and tool laboratory. Over the last 35 years it has been engaged in:

- Courtroom Models
- Patent Models
- Test Fixtures
- Product Development Models
- Displays
- Facility Repairs
- Restoration
- Tool History
- Furniture Building
- Shipping Container Construction
- Workshop Instruction / Training
- Woodworking Tool Safety Research
- State-of-the-Art Woodworking Machines

SAFETY PRODUCTS:

Triodyne Safety Systems, L.L.C. (Est. 1998)

666 Dundee Road, Suite 103
Northbrook, IL 60062-2702
(847) 647-9291
FAX: (847) 647-2047

Officers/Directors

Ralph L. Barnett
Paula L. Barnett
Joel I. Barnett

President

Peter J. Poczynok

Vice President of Operations

Peter W. Warner

Senior Science Advisor

Theodore Liber, Ph.D.

Mechanical Engineering

Ralph L. Barnett

Peter J. Poczynok

Aquatics Safety Consultant

Ronald M. Schroeder

SAFETY RESEARCH:

Institute for Advanced Safety Studies (Est. 1984)

666 Dundee Road, Suite 103
Northbrook, IL 60062-2702
(847) 656-1258
FAX: (847) 647-2047

Chairman

Ralph L. Barnett

Director of Operations

Paula L. Barnett

Information Services

Marna S. Sanders

Senior Science Advisor

Theodore Liber, Ph.D.

CONSULTANTS:

Richard M. Bilof, Ph.D.

Electromagnetic Compatibility

Richard Gullickson

Industrial Hygiene/Safety/Chemistry

David W. Levinson, Ph.D.

Senior Metallurgical Advisor

Steven R. Schmid, Ph.D.

Food Processing Equipment

Diane Moshman

Chemical/Environmental

Engineering

Harry Smith

Electrical Engineering

Kim M. Mlaczowski

Fire and Explosion

William A. Wangler

Construction

Joseph Wangler

Construction

Cheryl A. Patten, Ph.D.

Bio-mechanical Engineering

William G. Switalski

Mechanical Engineering

Bob Kaplan

Model Making

Computer Animation



Figure 2 - Random Orbital Sander, 1" Belt Sander, 6" Belt / 12" Disk Sander (front of center island).



Mortiser, Oscillating Spindler Sander, and 20" Disk Sander (middle of center island). Thickness Planer (right center).



Figure 3 - Shaper, Vacuum Table, Router Table (center).



Figure 4 - Six Braces, Three Hand Drills, Four Breast Drills, Four Battery Powered Hand Drills, Seven Electric Drills, Two Hammer Drills, Push Drills (left rear wall). 20" Metal / Wood Bandsaw (center rear). Overhead Router (right rear). Six Nail Guns (center rear wall).



Figure 5 - Shaper Accessories (middle wall). Layout Tools (right wall).



Figure 6 - 12" Radial Saw with ripping capability (center). Portable Sanding Machines on the wall have equivalent stationary machines in the island. You can drill a square hole with a Mortising Machine (right front).



Figure 7 - Jig Saw (foreground - left). Scroll Saw (foreground - right).

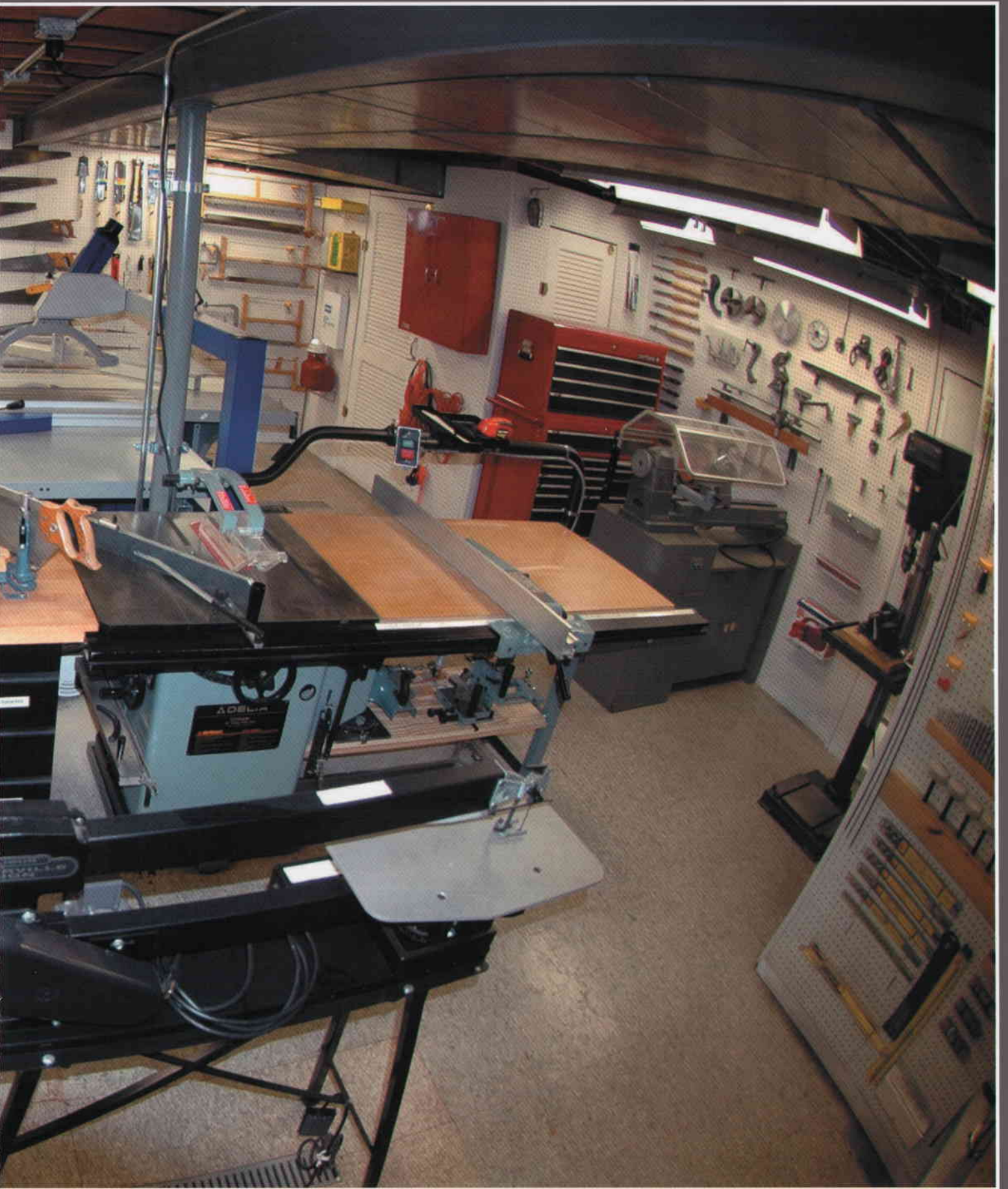




Figure 8 - Fifteen Saw Units; Two Drill Presses and a Wood Lathe. Can you find the fifteen saws? Antique tools on rear wall.



Figure 9 - 10" Delta Unisaw with Jigs (left). 14" Austrian Sliding Table Saw (right).



Figure 10 - Eighteen styles of Drill Bits include Spoon Bits, Gimlets, Ship Augers and Hole Saws (right). The red floor cabinet contains the only tools not on display; Wrenches, Pliers, Taps and Dies, Pincers, Sheet Metal Cutters, and Knives (left).

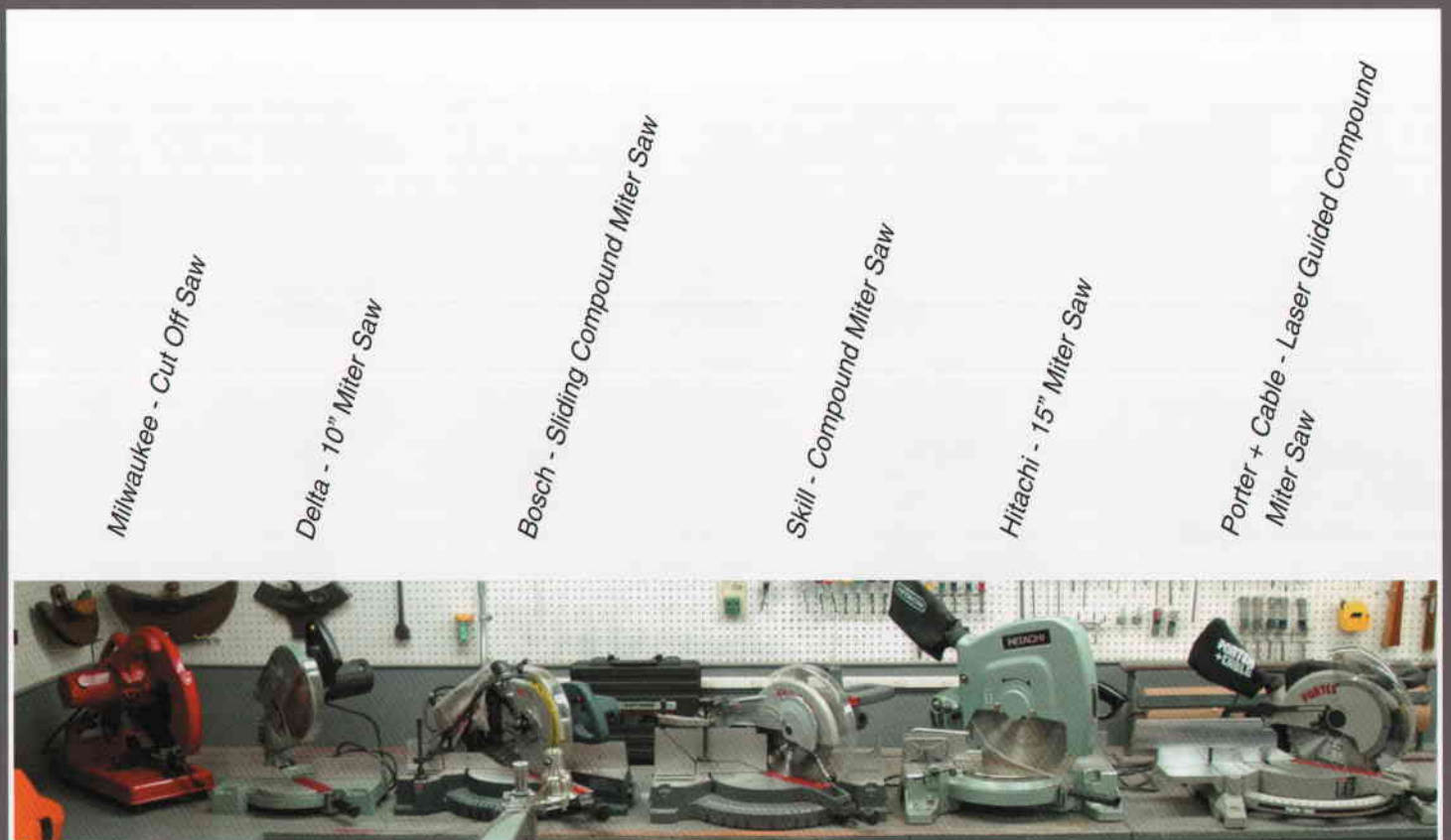


Figure 11 - Miter and Cut-Off Saws with various cutting and guarding concepts. Note: Cross cutting capability only.



Figure 12 - Fifty-four Hand Saws and five Power Saws. Large blocks of foam cannot be cut using the power saws.



Figure 13 - Typical Cooper Tools for making barrels. Who tilted the drill bits?



Figure 14 - These "all metal" planes are really groovy. The central Bench Planes are grouped by manufacturers from No. 1 to No. 8. Pairs shown have plain and corrugated sole plates. The right column displays Metal Block Planes. The top right wall shows two Core Box Planes for hollowing out semi-circular channels and a Curve Rabbet Plane. Second from the top is an Adjustable Shooting Board.

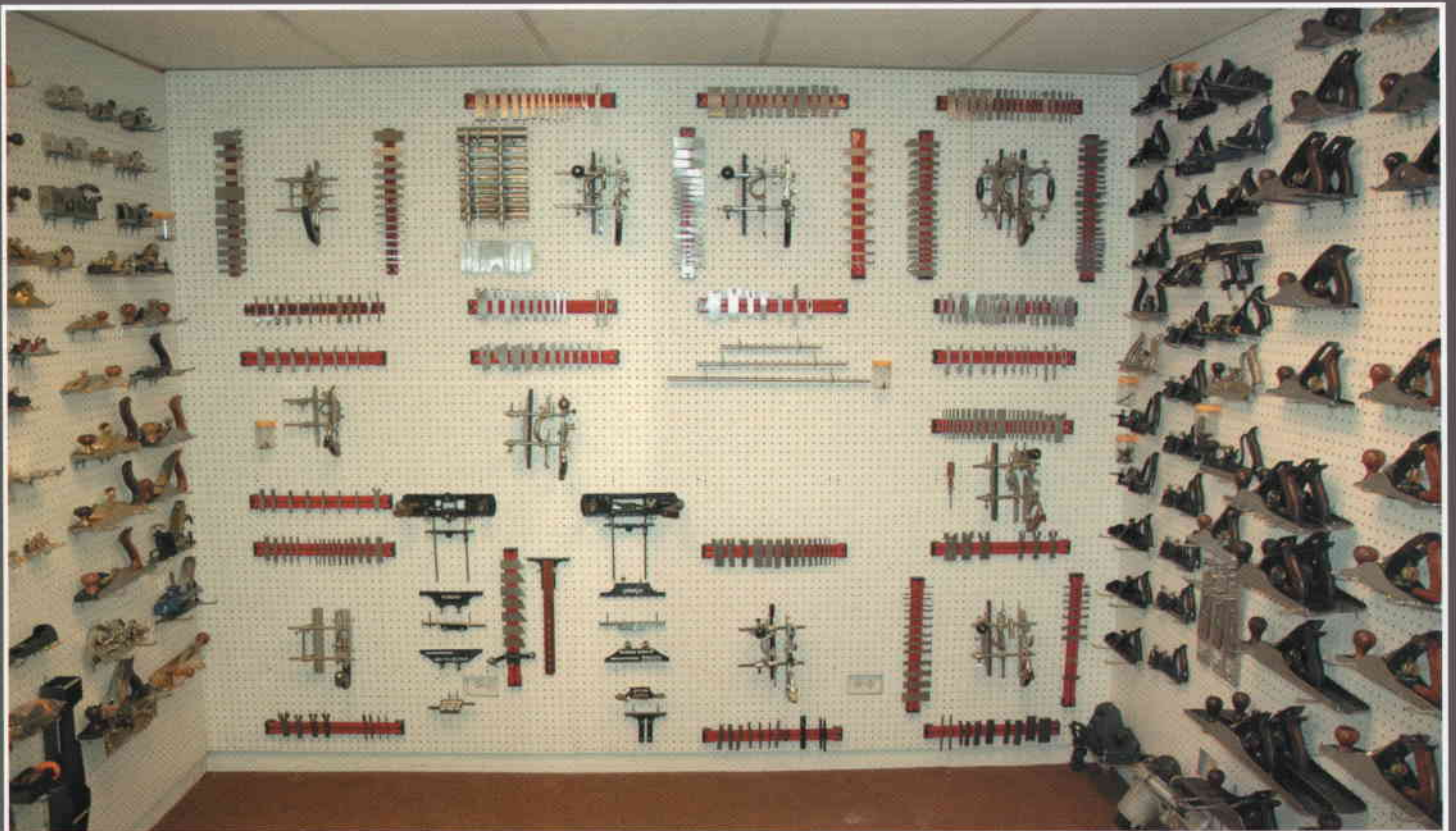


Figure 15 - Combination Planes with straight grooves in hundreds of profiles. These tools are the forerunner of the router.



Figure 16 - Wood Plane Collection reflects soles with many complex shapes. Metal Frogs are found on the right; the other blades are held with wood wedges.



Figure 17 - The planes on the lower left use razor blades. Can you locate the two oxymora: Circular Planes?



Figure 18 - Carving Station with Woodburning and Flexible Shaft Woodcarving Tools.



Figure 19 - Scrapers, Hand Routers, Spokeshaves, Scorp, Inshave, Shavehooks, and Burnishers (center) . Dovetail Jig (right).



Figure 20 - Sharpening Systems (left cabinet); Stanley and Porter-Cable Lock Mortiser (middle); various style Routers and Router Kits (right cabinet).

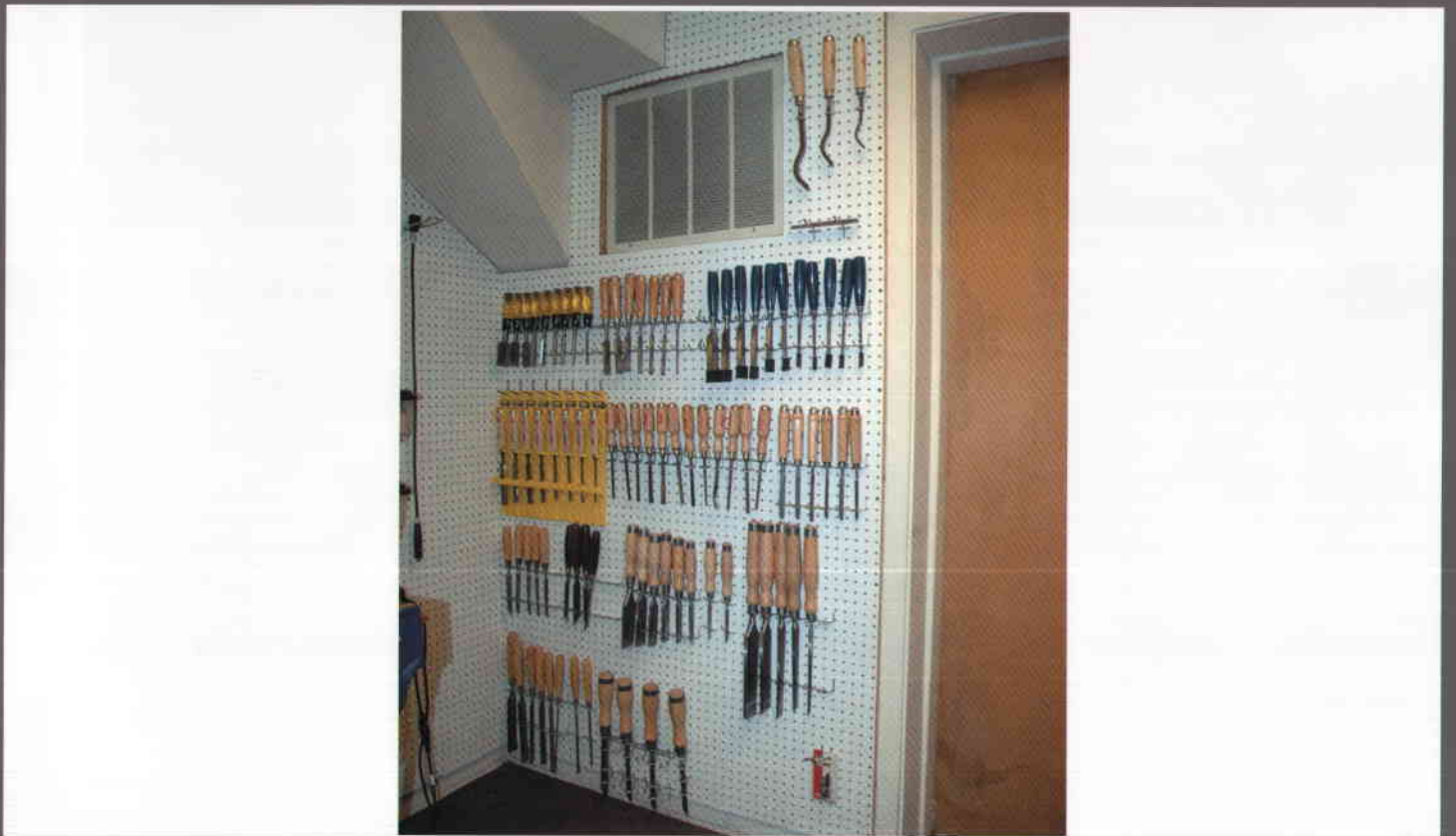


Figure 21- Swan Neck Mortise Chisels (top row); Bevel Edge Chisels (2nd row); Carving Chisels (3rd row); Skew Chisels (4th row - left); Framing Chisels (4th row - right); Mortise Chisels (5th row).



Figure 22 - Bridge City Tool Works Layout and Commemorative Tools.



Figure 23 - Granite Layout Table (Left); Small Lasers and various length Tape Measures (center); Drafting Table (right). Can you identify the historic Stanley #1 Odd Job layout tool?



Figure 24 - Fish eye view of Panel Saw - Router. Router Attachment found at top-right of figure.



Figure 25 - Hydraulic Hose-Fitting Crimper (left). Are there ever enough clamps?

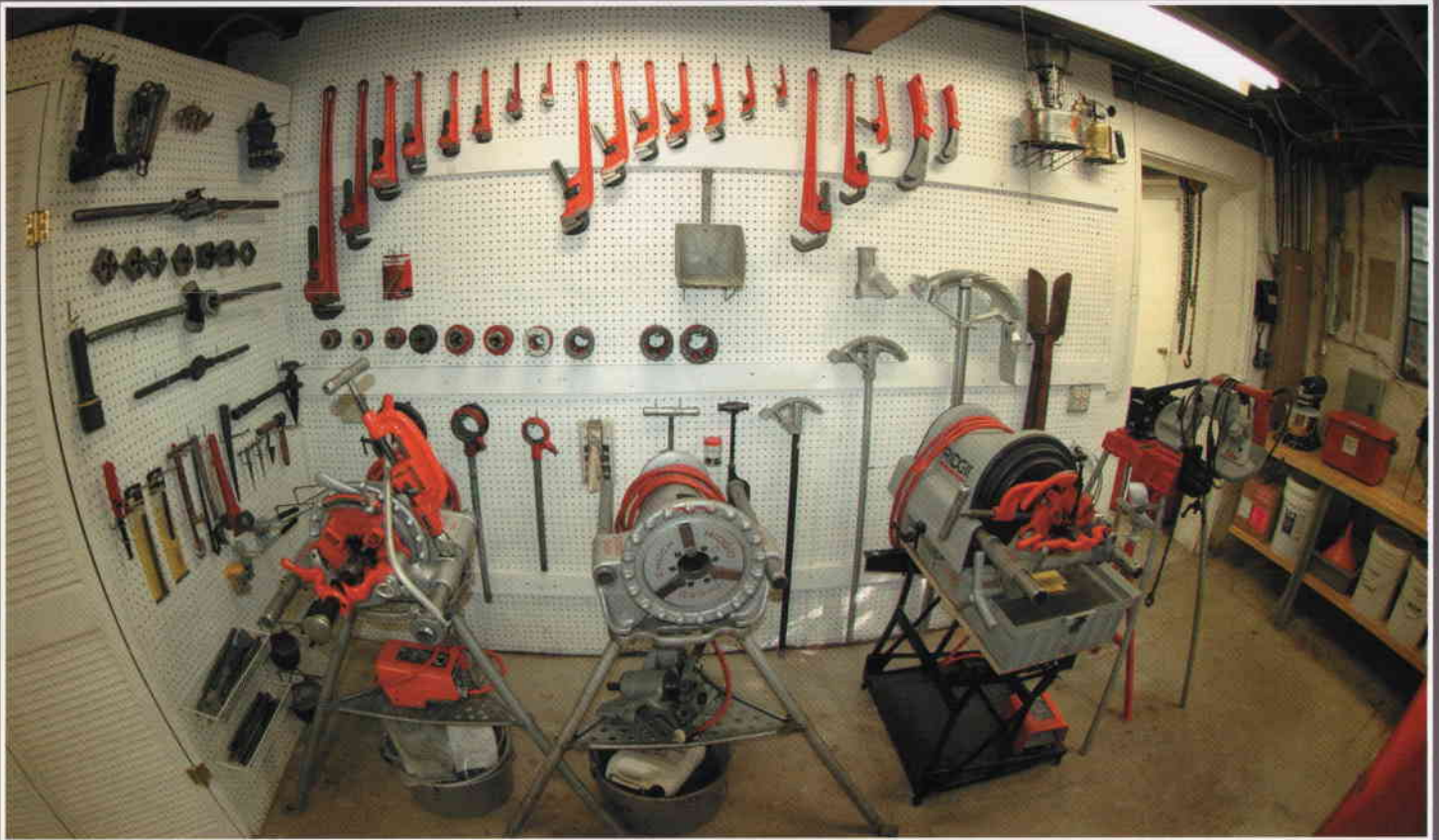


Figure 26 - Three generations of Ridgid Pipe Threading Machines. How many Manual Pipe Threaders are shown?



Figure 27 - Demolition Cutting Torches (Left). Historical Axes: Splitting Froe, Right and Left Broad Axes, Hand and Straight Adzes, Competition Throwing Axe and American Felling Axe. Hammer collection includes; Cross Peins, Auto Body and Brass Hammers.



Figure 28 - Sandblasting and Cleaning Station



Figure 29 - Paints, Solvents, Lubricants and Fillers. Why do collectors keep empty tool boxes?

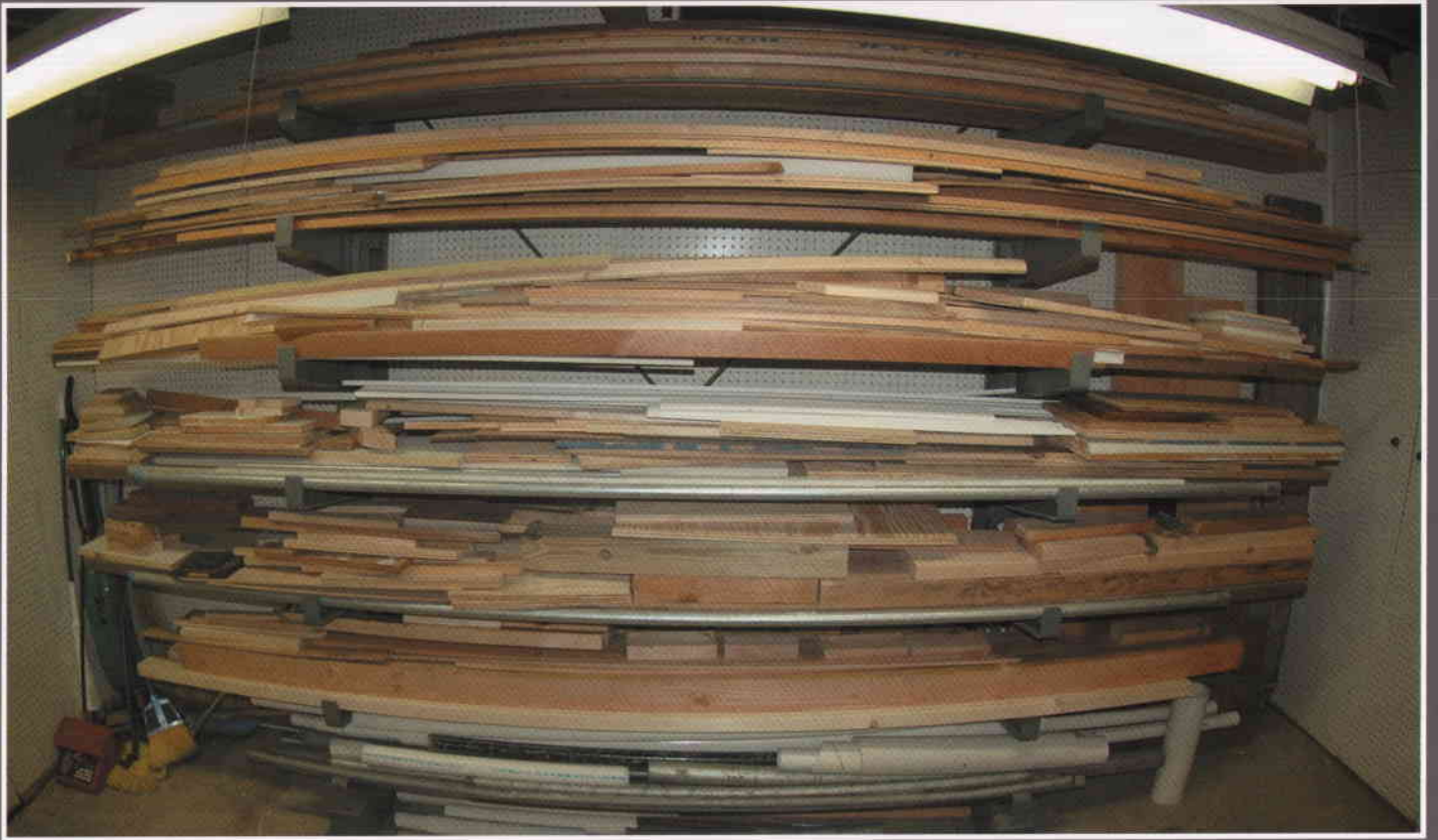


Figure 30 - Soft Wood Inventory



Figure 31 - Small Parts Inventory



Figure 32 - OSHA Lockout - Tag Out Station

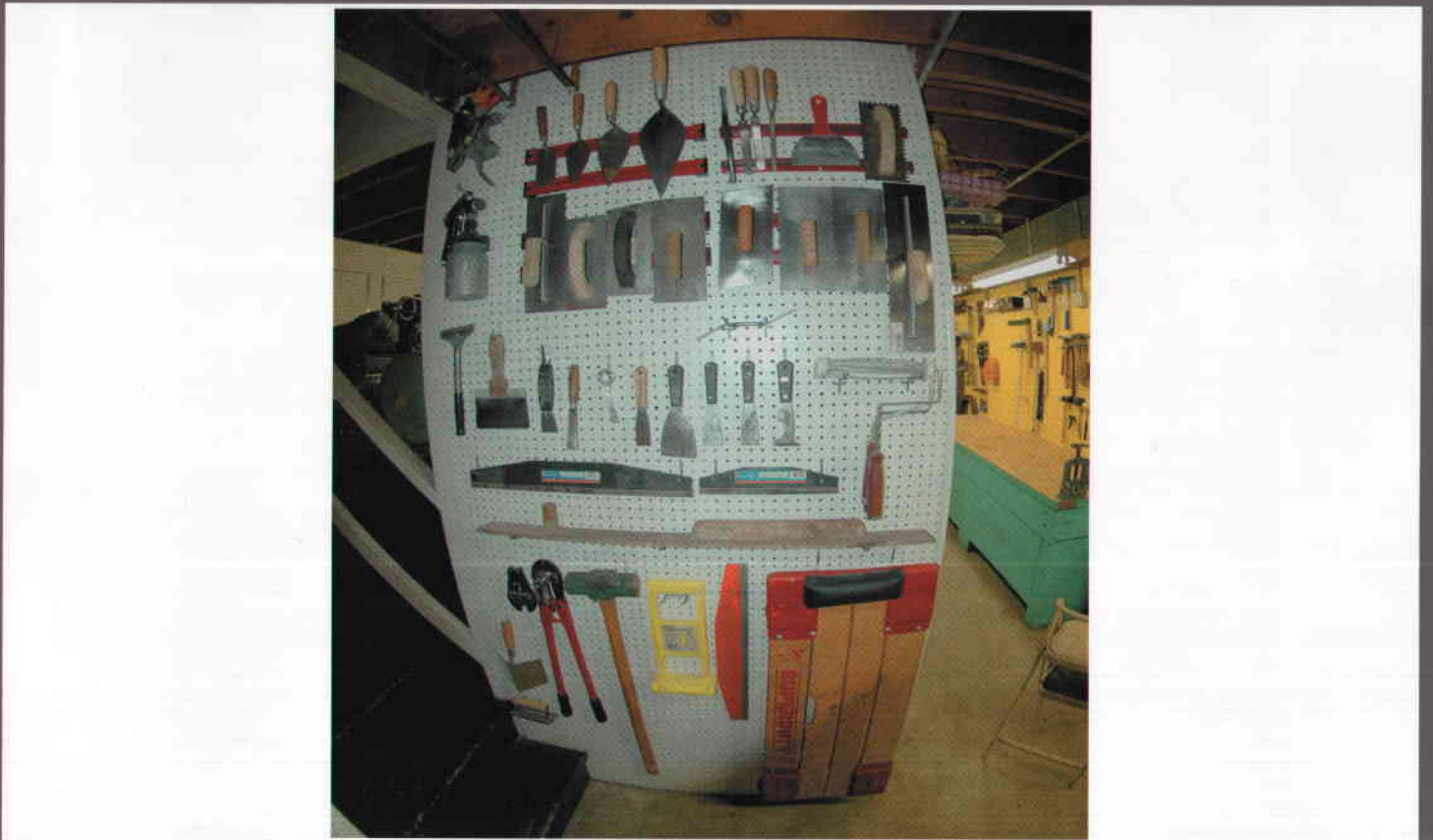


Figure 33 - Mostly Concrete Trowels